



HYATT CENTRICSM
MELBOURNE

WEDDINGS

AT HYATT CENTRIC MELBOURNE

CELEBRATE YOUR BIG DAY IN STYLE

Our uniquely stylish event spaces and luxurious accommodations provide the perfect setting for your wedding festivities.

Accommodating intimate or grand ceremonies and receptions, our team of experienced professionals will be there to deliver for you within the inner-city venue of your dreams.

Whether you're looking for a formal sit-down dinner, a casual buffet, or a cocktail party, we have options to suit any style or budget.

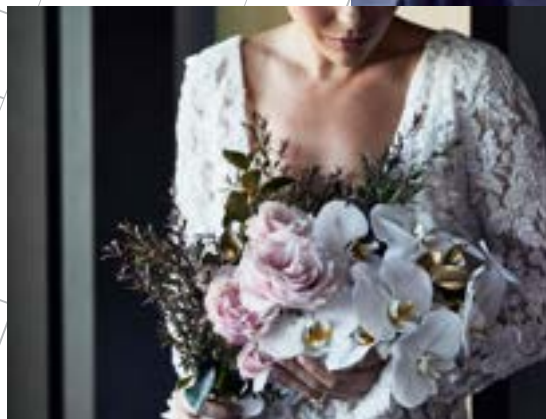
After your big day, retire to one of our luxurious accommodations, featuring plush bedding, modern amenities, and stunning views of the city

Note: All packages, menus and activations within this presentation are flexible to work with your requirements - we are here to help create your bespoke wedding and can adjust our offering to meet your needs.

CONTACT US

+613 9120 1234
+613 9120 1215
+613 9120 1213

25 Downie Street,
Melbourne, VIC 3030
www.hyattcentricmelbourne.com



HYATT CENTRIC MELBOURNE

ABOUT HYATT CENTRIC MELBOURNE

Winner of the Victorian Accommodation Awards for Excellence – All Abilities Hotel Award for 2023 and TAA's Luxury Lifestyle Accommodation Hotel of the Year for 2022, Hyatt Centric Melbourne features 277 chic rooms, an upscale restaurant inspired by the local hospitality scene, a premium fitness studio, and indoor pool.

Centrally located on Downie Street in Melbourne's central business district (CBD), the hotel is just minutes from Docklands and Southbank precincts, home to world-class entertainment, convention centres, and sporting venues.

The hotel is built on local Melbourne stories – there is a taste of Melbourne in every corner. The builders, architects, interior designers, furniture makers, amenities, and coffee beans – are all Melbourne based.



ABOUT THE VENUE

Hyatt Centric Melbourne offers 257 square meters of stylish indoor event space, plus a beautiful 210-square-metre alfresco terrace for an elegant wedding in an unrivalled location. Our venues support versatile solutions, equipped with the latest audiovisual technology and high-speed Wi-Fi.

Whether you're planning an intimate reception or grand wedding affair, we'll create an unforgettable occasion tailored to your needs. Our versatile space can accommodate up to 140 guests for a sit-down dinner or a cocktail-style reception for up to 200 guests.

FIRST COMES LOVE, THEN COMES TRAVEL

Cheers to you on your engagement. You're ready for the perfect wedding, and we're here to help you take it above and beyond. Our friendly and talented team at Hyatt Centric Melbourne will take care of every last detail and flawlessly execute the day of your dreams.



WEDDING DINING

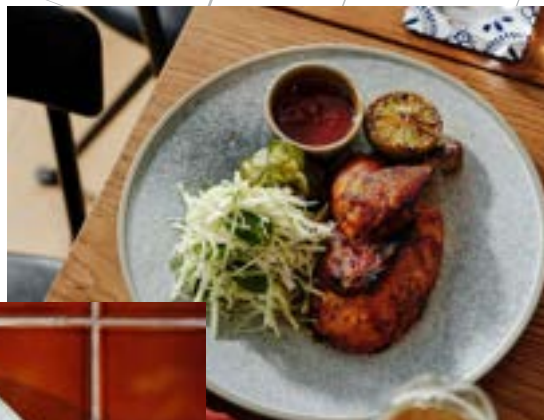
At Hyatt Centric Melbourne, we believe food has the power to bring people together, we also understand the importance of generosity.

Our family style tables invite your guests to connect over a delicious and visually stunning conversation starter setting the tone for your special day.

Not only beautiful, our sharing plates offer more variety while encouraging interaction and connection from the onset

Forget the stiff formality of standard set menus and spread your love across the tables!

Note: All packages, menus and activations within this presentation are flexible to work with your requirements – we are here to help create your bespoke wedding and can adjust our offering to meet your needs.



I'M YOURS PACKAGE

from \$165 pp

There is nothing standard about the I'm Yours Package, it's the go to option for love at first bite. Our grazing table aims to bring your loved ones together with a variety of fresh, seasonal dishes. Sharing is caring and a generous table opens up the conversation + it also feeds the gram! Mains include a sumptuous offering of tender lamb shoulder and juicy hazel denes free range chicken. Rich, decadent and irresistible our double chocolate brownie caps of a perfect end to your special day.

ROOM FEATURES

- Grazing Table (shared entrée)
- 2-course menu (mains and dessert)
- 5-hour Bellarine Savvy Beverage Package
- Bespoke catering options

PERSONAL TOUCHES

- Complimentary use of Bellarine Terrace for ceremony or pre-drinks
- Dedicated wedding coordinator
- Complimentary Deluxe King View room (night of the wedding only)
- Complimentary use of hotel public area for photos
- Personalised electronic lobby & function room signage
- Oval tables with linen and napkins





I'M YOURS PACKAGE MENU

GRAZING TABLE

Victorian cheeses, Chefs selection from the Gippsland and Yarra Valley regions

Vitello tonnato, rocket, parmesan

Smokey eggplant, garlic, lemon, parsley, sourdough (V)

Dakos, fetta, cucumber, tomato, peppers, onion, oregano

Sourdough, cultured garlic butter

MAIN EVENT

Free range bird, garlic mash, green beans, mustard jus

Gippsland lamb shoulder, pea risotto, fermented daikon, fetta

SWEET TOOTH

Double chocolate brownie, chocolate cremeux & honeycomb brittle (V)

WATERING

5-hour Bellarine Savvy Beverage Package

NEED MORE?

Ask about a private bar or canapés on the terrace.

Add live food stations or pop-ups for that extra WOW factor.

Need live music? We've got you covered.

Note: The menu is our recommendation, please discuss with our dedicated wedding specialist for any special requests or requirements.

IT MUST BE LOVE PACKAGE

from \$185 pp

The Spread is the bigger sibling to our grazing table, for when you want to pull out all the stops. A sharing table with food in abundance is not only the perfect welcome but a celebration of the good life to come. It Must Be Love is all about uniting and wowing your guests upon entering the Bellarine, being photogenic also helps to create lasting memories. The main event is a delectable feast featuring a Southern Rangers porterhouse and the freshest crispy skin Cone Bay barramundi. The sweet tooth option is a refined version of a true Aussie classic and an absolute crowd pleaser!

DINING EXPERIENCES

- The Spread (shared entrée)
- 2-course premium sit-down menu (alternating mains and set dessert)
- 5-hour Bellarine Savvy Beverage Package

PERSONAL TOUCHES

- Complimentary use of Bellarine Terrace for ceremony or pre-drinks
- Dedicated wedding coordinator
- Complimentary Deluxe King View room (night of the wedding only)
- Complimentary use of hotel public area for photos
- Personalised electronic Lobby & function room signage
- Oval tables with linen and napkins





IT MUST BE LOVE PACKAGE MENU

THE SPREAD

Cold cut & cheese selections, chefs selection of the best local and imported varieties

Hiramasa kingfish, green chili, lime, coriander, shallot, dill (GF, DF)

Hail Caesar, baby cos, parmesan, prosciutto, crostini, chives

Assorted mezze, marinated olives, pickled chili, hummus, pickled chili, haydari, crudities sourdough, cultured garlic butter

MAIN EVENT

Southern rangers porterhouse, potato gratin, cognac & pepper jus

Cone Bay barramundi, cauliflower, citrus, sage, burnt butter

SWEET TOOTH

Mango & lemon mini pavlova, mint & mango sorbet (GF)

WATERING

5-hour Bellarine Savvy Beverage Package

NEED MORE?

Ask about a private bar or canapés on the terrace.

Add live food stations or pop-ups for that extra WOW factor.

Need live music? We've got you covered.

Note: The menu is our recommendation, please discuss with our dedicated wedding specialist for any special requests or requirements.

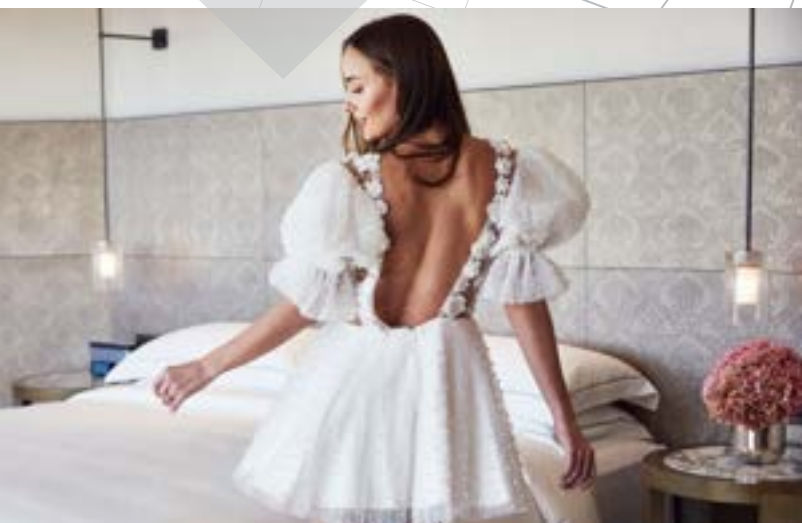
PERSONAL PREFERENCE

Invite your guests to a customized dining experience at your wedding with our Personal Preference option. Treat them to an elegant two or three course meal with a choice of menu. We present a personalized menu at each place setting, and our specially trained team take orders to ensure seamless service and an extra-special experience. Your Hyatt Centric Melbourne wedding specialist will help you tailor the options to satisfy everyone's individual tastes and create a meal to be remembered.

ADDITIONS TO CONSIDER

- Cake cutting and serve with cream/coulis at \$8.00 per person
- Kids set menu available from \$20.00 per person
- Freshly brewed coffee, specialty teas and mints at \$10.00 per person
- Sparkling toast (one glass per person) at \$10.00 per person
- Band/crew meal at \$45.00 per person
- Canapés at \$8.00 each

Once contract and deposit are received, food tasting for 2 people scheduled within 2 months before the wedding date at a special rate of \$105 per person on weekdays and \$135 per person on weekends (food menu only)



DETAILS MADE EASY

STAY THE NIGHT

- Complimentary Deluxe Room for the bride and groom on the night of your wedding can be upgraded to a King Suite at an additional cost of \$400 per night.
- A discounted accommodation rate can be arranged for guests attending your event at Hyatt Centric Melbourne. A minimum of ten guest rooms must be guaranteed for a special group rate.
- Check-in time is 3:00 p.m. and checkout time is 11:00 a.m.

EXTRA SERVICE OPTIONS

- 1 hour ceremony can be booked privately in the Conservatory for a maximum of 30 people with theatre seating set up at \$1,500.00 room hire with chairs
- Access for extra hours set up is subject to hotel availability, fees may apply
- Security for the duration of the event at \$100.00 per hour, for a minimum of 4 hours
- Our partners, Encore Event Technologies can assist with any Audio Visual Requirements
- Valet parking can be arranged at \$60.00 per car.

T'S & C's - Your final numbers and payment must be received at least seven (7) days prior to your booking. A non-refundable \$2,500 deposit will be collected to secure the date that will be deducted from the final contract.



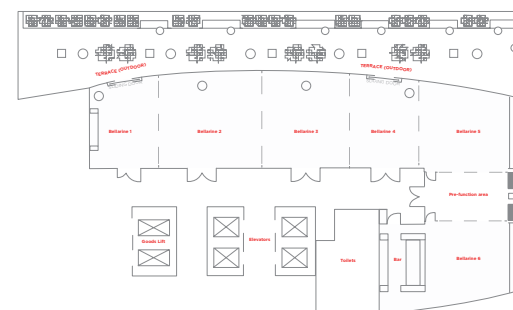
BELLARINE

Bellarine is our dedicated events space that can be used in its entirety, or separated as required. A space with seamless elegance, where our stunning outdoor terrace blend together with the indoors for seamless elegance offering you the perfect setting to celebrate and create unforgettable memories.

VENUE FEATURES

- Six rooms, ranging from Bellarine I to Bellarine VI, totaling 257sqm
- AV services available from Encore Event Technologies
- Complimentary Wi-Fi
- Bespoke catering options
- Floor to ceiling windows with curtains and block out blinds
- Access to the outdoor terrace, with seating and lighting
- In-built bar area in Bellarine VI
- High ceiling room - 3.85 m

FLOOR PLAN



Capacity: Bellarine I to V
Room Size: 198sqm

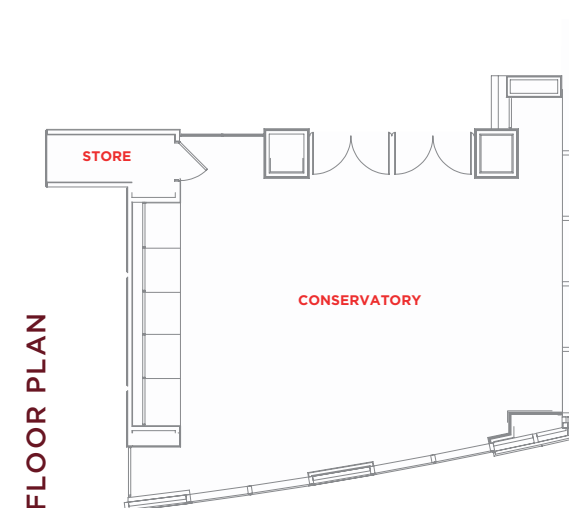
Long table	198 pax
Banquet	140 pax
Reception	200 pax
Cabaret	112 pax

CONSERVATORY

Our Conservatory on level 25 sees the sun rise each morning, and provides a semi-private, exclusive space within the restaurant floor for your event.

ROOM FEATURES

- Floor to ceiling windows with panoramic views across Melbourne and the bay
- Bespoke catering options
- Complimentary Wi-Fi
- Full bar and restaurant service



Capacity: Conservatory

Room Size: 55sqm

2 x Long Tables 31 pax

Theatre 30 pax

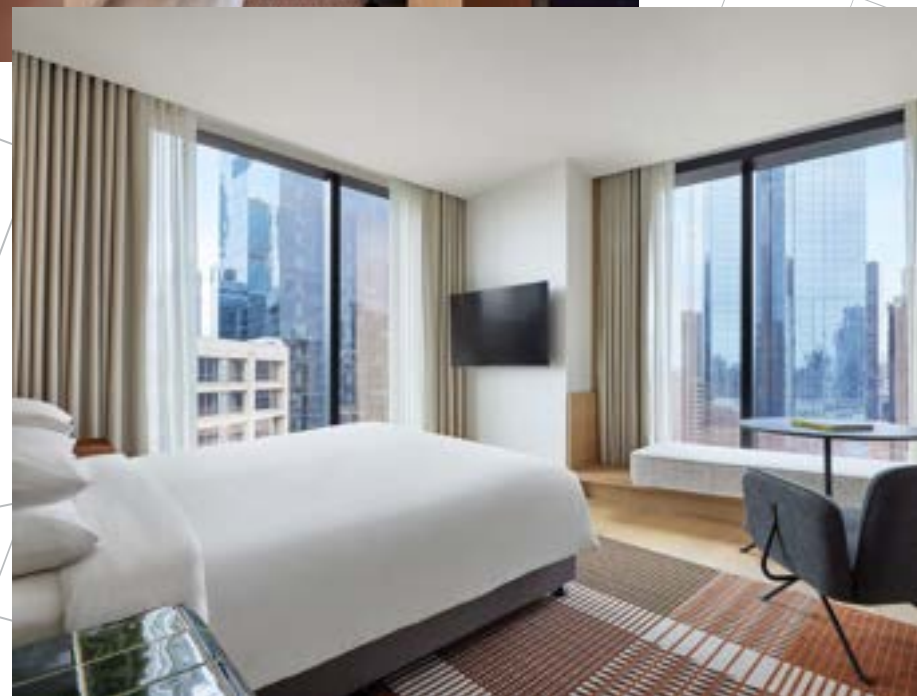
HYATT CENTRIC MELBOURNE

ACCOMMODATION

With a minimalist design, our rooms are the perfect launch pad for the curious traveller. Step out onto a historic laneway to begin your discovery of Melbourne, returning to rooms that relax and recharge. Enjoy locally sourced luxury amenities from Mr. Smith, stay connected and in-the-know with technology at your fingertips and uncover hidden gems courtesy our friendly team.

CHECK-IN 3:00 PM
CHECK-OUT 11:00 AM

[VIEW MORE ROOM TYPES HERE](#)



Winner of 2023 Victorian Accommodation Awards for Excellence

All Abilities Hotel Award

We prioritize inclusivity by providing a pool hoist for differently abled guests. Additionally, we offer accessibility rooms in our deluxe and suite room types, ensuring comfortable accommodations for all. Accessibility bathrooms are available in all public areas, and our highly trained front office team can accommodate the needs of differently abled guests.



HYATT CENTRIC™
MELBOURNE



HYATT CENTRIC MELBOURNE

25 DOWNIE STREET
MELBOURNE, VIC 3000

@hyattcentricmelbourne
#hyattcentricmelbourne
Facebook.com/hyattcentricmelbourne

www.hyattcentricmelbourne.com
melct-sales@hyatt.com